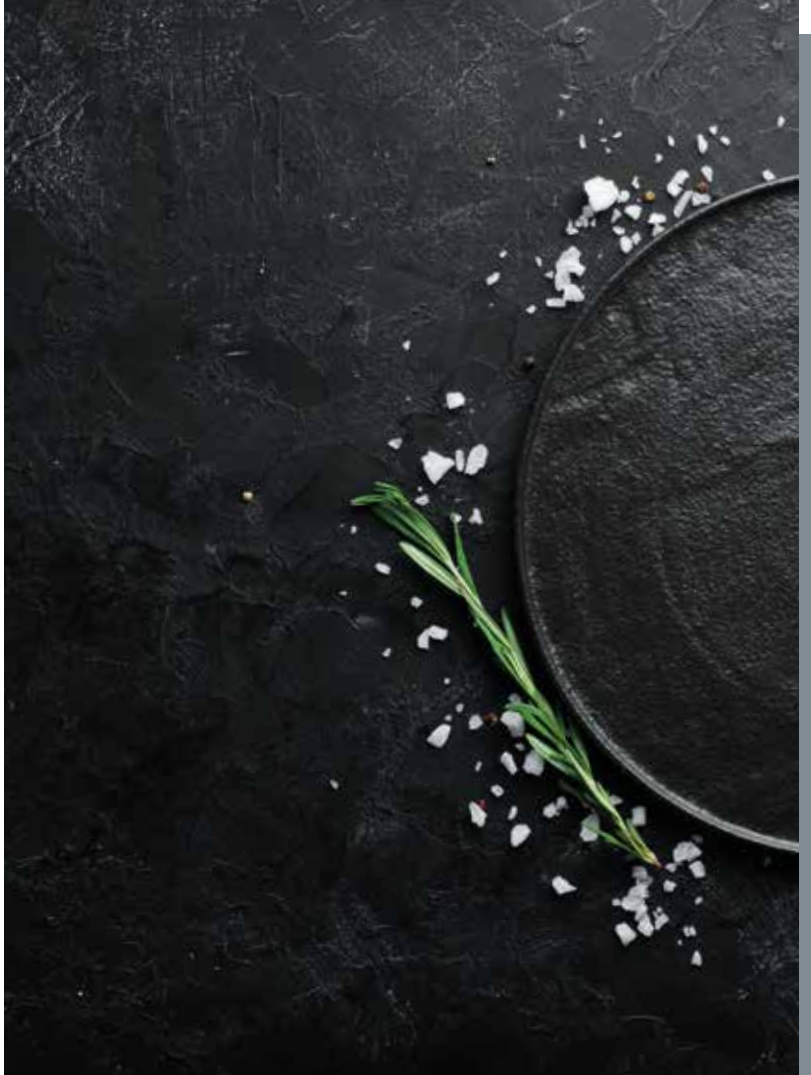


PRODUCT CATALOGUE

CONTENT



CLIP SYSTEMS is synonymous for high-quality products with the best value for money for all your clip and packaging requirements. CLIP SYSTEMS products can be used as complete solutions, but can also be combined with other manufacturers' products.

Application areas:

- Clipping meat and sausage products in artificial and natural casings
- Packaging poultry and cheese in plastic bags and films
- Packaging fruit and vegetables in nets and sacks
- Closing bags for live fish transport
- Packaging non-food products (chemicals, medications, pet food, and much more)



01

PRODUCT RANGE 04

02

ALUMINIUM CLIPS 06

03

TABLE-TOP SINGLE CLIPPER

BCS-50SC/175SC/200SC/700SC 12

BCS-700SC-H 14

04

TABLE-TOP DOUBLE CLIPPER

BCS-200DC 16

BCS-200DC-R 18

05

SEMI-AUTOMATIC DOUBLE CLIPPER

BCS-200SM 20

06

FULLY AUTOMATIC DOUBLE CLIPPER

BCS-200AM 22

BCS-700AM, AM-S, AM-XL 24

07

CLIPS PACKAGING AND ACCESSORIES 26

ALUMINIUM CLIPS

PRODUCT RANGE

Aluminium clips are available in all standard market sizes and various hardness grades. They are a perfect match for our clippers, although they are also completely compatible with all common clip machines from other manufacturers.

Colours:	Silver, red, blue, green, yellow, black and white
Colour Options:	Completely coated – the wire is completely coloured Partially coloured – the clips are only coloured on the outside
Versions:	Reels, spools, strips

01



CLIP MACHINES

All CLIP SYSTEMS clip machines are operated with compressed air and are characterised by well-conceived ergonomics and the use of high-grade materials. Thanks to the predominant use of stainless steel, CLIP SYSTEMS clip machines are hygienic and easy to clean.

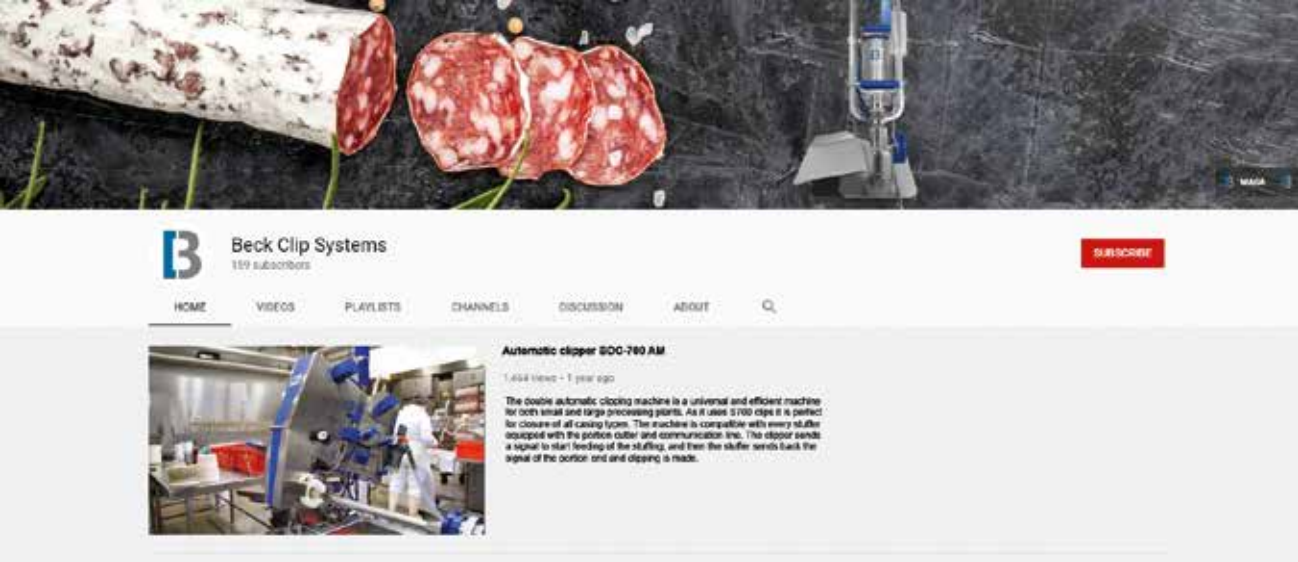
Choose the right product for your application from our product range:

- Manual table-top clippers
- Semi-automatic double clippers
- Fully automatic double clippers



CLIP SYSTEMS ON YOUTUBE

Watch interesting videos of our wide product range including clips, clippers and clip machines, used in the food and meat processing industry, as well as the original MAGA® meat press. Get your information on the YouTube-Channel of CLIP SYSTEMS.



For detailed information about our clips and clippers, please contact us:



Product support
Sales

T +48 503 401 305
T +48 690 001 721

Mo-Fr

7 am - 3 pm



Product support
Sales

sales.int@beck-clipsystems.com



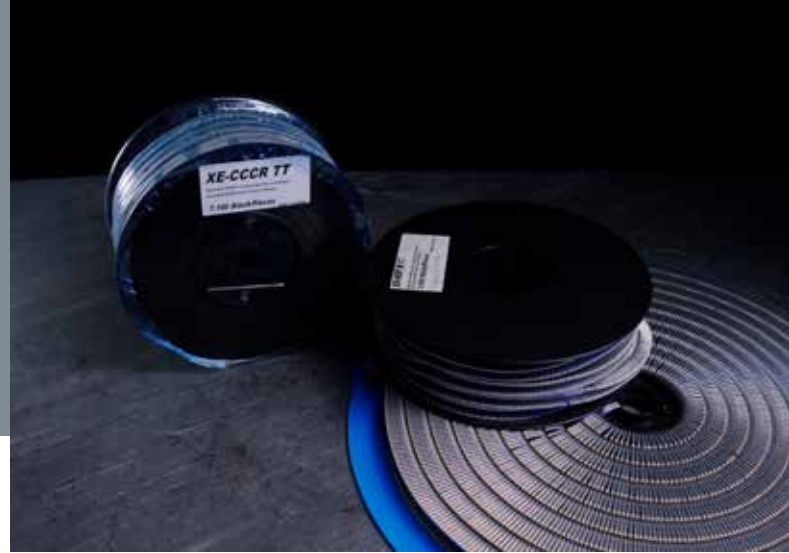
www.beck-clipsystems.com

02

**ALUMINIUM
AT A GLANCE**

ALUMINIUM CLIPS

CLIPS



ASSORTMENT

- Ø from 1.72 to 3.40 mm | from 0.07 to 0.13 inch
- Inner dimension from 6.50 to 12.50 mm | from 0.25 to 0.50 inch

COLOUR OPTIONS

- Completely coated – the wire is completely coloured
- Partially coloured – the clips are only coloured on the outside

SPECIFICATIONS

- Reels, spools, strips
- Different tensile strengths available
- Bright finish or coloured

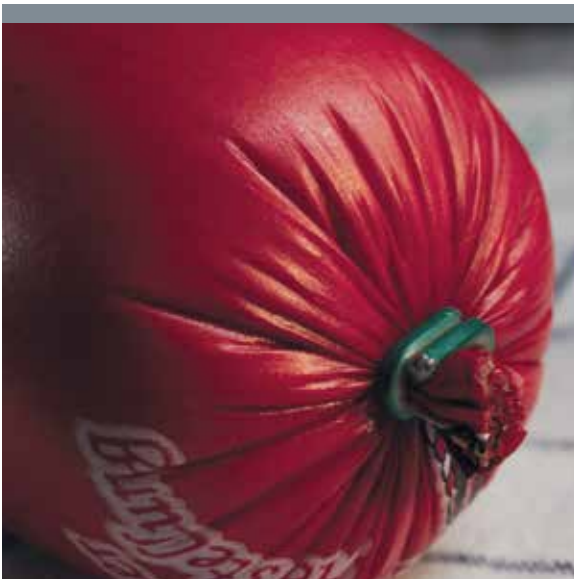
Our portfolio comprises U-clips that are available in strips and on spools or reels. All CLIP SYSTEMS aluminium clips can be formed into flat clips or roll clips and feature strongly rounded and brush-finished ends to prevent any damage to the casings. The additional wax coating protects even sensitive materials, such as natural sausage casings.

OUR PORTFOLIO



FLAT CLIPS

are recommended for sensitive packaging materials, such as natural sausage casings. The rounded and brush-finished ends of the clip close softly without doing any harm to the material.



ROLL CLIPS

are especially suitable for robust packaging, such as artificial sausage casings and wherever an extremely leakproof closure is required, such as vacuum bags or packaging of liquids.

SUITABLE FOR

Table-top single clippers BCS-50SC, BCS-175SC, BCS-200SC, BCS-700SC

Table-top single clipper BCS-700SC-H

Table-top double clippers BCS-200DC, BCS-200DC-R

Semi-automatic double clipper BCS-200SM

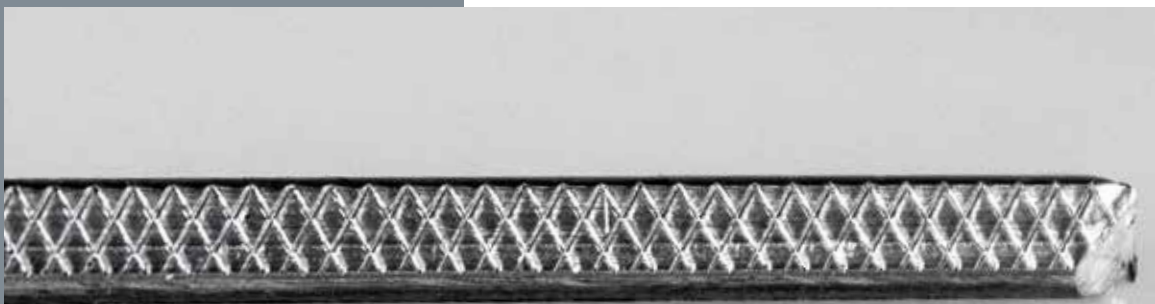
Fully automatic double clipper BCS-200AM

Fully automatic double clipper BCS-700AM, AM-S, AM-XL



COLOUR CODE

Coloured clips allow batches to be identified visually for tracing purposes. The clips are available in seven different colours: silver, red, blue, green, yellow, black and white.



GROOVED INNER SURFACE

Clips are available optionally with or without inside knurling/ grooves for improved hold.

CLIP- MACHINE

S

TABLE-TOP SINGLE CLIPPERS BCS-50SC/175SC/200SC/700SC

The new range of single clippers BCS-SC are easy to set up, lightweight and reliable. Due to innovative construction and cylinder with stainless-steel finishing, devices are very ergonomic, easy to maintain and easy to clean. New construction also allows keeping the highest hygienic standards.

- Fixed knife to cut excess casing
- Handle for safe transport
- Adjustable clip closure



BCS-SC SERIES

Automatic cutter (left or right).



SPECIAL ACCESSORIES

Pressure reducer



DEVICE SPECIFICATION

HEIGHT	WIDTH	LENGTH	WEIGHT
765 mm 30,12"	240 mm 9,45"	466 mm 18,34"	11.60 kg 25,57 lbs

Operating pressure Max. 6 bar | max. 90 psi

Air consumption 4.20 l

SUITABLE CLIPS

BCS-50SC	XK-EI, XK-FA, XK-HF, XK-IA (similar to K50 series)
BCS-175SC	XT-BHF, XT-CAA, XT-CFA (similar to T-200 series) XG-BHF, XG-CAA, XG-CFA (similar to G-175 series)
BCS-200SC	XE-CAA, XE-CBA, XE-CCA, XE-CDA, XE-CEA (similar to E-200 series)
BCS-700SC	XS-HDF, XS-HEA, XS-HEE, XS-HEH (similar to S-700 series)

TABLE-TOP SINGLE CLIPPER BCS-700SC-H



A specially designed single clipper in a horizontal version is an ideal machine for closing products, such as ice cubes or other liquids, e.g. soups in bags. The machine can also be equipped with an aeration system — oxygen dosing. The version with aeration is perfect for packing tropical fish. The clipper BCS-700SC-H uses S-700 clips thanks to which tight closing of various casings, including bags of different thicknesses, is possible.

- Adjustable clipper stand
- Fixed knife to cut excess casing
- Adjustable clip closure

BCS-700SC-H

The BCS-700SC-H clipper can be equipped with an oxygen filling system.



SPECIAL ACCESSORIES

Pressure reducer



DEVICE SPECIFICATION

HEIGHT	WIDTH	LENGTH	WEIGHT
1420 mm 55.90"	565 mm 22.24"	330 mm 19.99"	11.50 kg 25.35 lbs

Operating pressure Max. 6 bar | max. 90 psi
Air consumption 4.20 l

SUITABLE CLIPS

BCS-700SC-H	XS-HDF, XS-HEA, XS-HEE (similar to S-700 series)
-------------	--------------------------------------------------

TABLE-TOP DOUBLE CLIPPER BCS-200DC

The BCS-200DC table-top double clipper is a reliable device for fastening plastic and natural sausage casings in a calibre range of 25 to 100 mm (0.98 - 3.94 inch). The clipper is easily operated, quick to set up and saves space. It is especially suitable for manufacturing ring-shaped sausage products and for packing in nets.



- Hygienic thanks to rustproof stainless steel cylinder
- Automatically cuts portions to size
- Optional loop inserter and string dispenser available
- Space-saving and easy to operate
- Upgradable to semi-automatic operation through the addition of modular components



QUICK AND VERSATILE

Placed freely on a work surface, the table-top double clipper is immediately ready to use. The clipper processes five clip sizes and offers a wide range of possible uses. The BCS-200DC clipper can be equipped with an automatic loop feeder and/or an automatic twine feeder.

ACCESSORY FOR NET PACKAGING

The device can be equipped with a special kit knife and short sheets for easy packing large products, such as hams in nets.



DEVICE SPECIFICATION

HEIGHT	WIDTH	LENGTH	WEIGHT
850 mm 33.46"	300 mm 11.81"	450 mm 17.72"	19.5 kg 42.99 lbs

Clip capacity	2 x 350 clips
Calibre	25 – 100 mm 0.98 – 3.94 inch
Operating pressure	Max. 6 bar max. 90 psi
Air consumption	4.20 l
per stroke	Performance at 90 psi 6.2 bar

SUITABLE CLIPS

BCS-200DC

XE-CAA, XE-CBA, XE-CCA, XE-CDA, XE-CEA (similar to E-200 series)

TABLE-TOP DOUBLE CLIPPER BCS-200DC-R

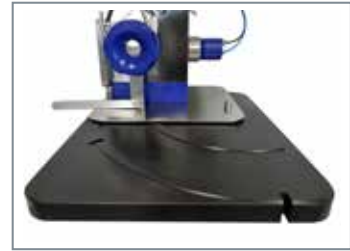
The pivoted BCS-200DC-R table-top double clipper is a reliable device for fastening plastic and natural casings in a calibre range of 25 to 100 mm (0.98 - 3.94 inch). The clipper is easily operated, quick to set up and saves space. It is especially suitable for manufacturing ring-shaped sausage products and for packing in nets.

- Pivotal 60° and 90°
- Moveable casing brake
- Automatically cuts portions to size
- Upgradable to semi-automatic operation through the addition of modular components



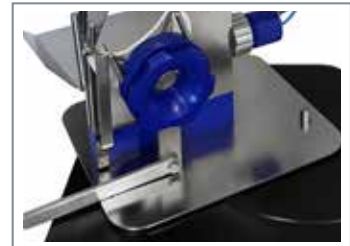
PIVOTABLE 60°/90°

The clipper is pivotable for easier loading of the filling tube. It can then be locked back into the pre-set operating position.



OPTIONS

Optionally, the BCS-200DC-R can be equipped with a string dispenser, a special blade for netting and different filling tubes and casing brakes.



DEVICE SPECIFICATION

HEIGHT	WIDTH	LENGTH	WEIGHT
910 mm 35.83"	510 mm 20.08"	660 mm 25.98"	30 kg 66.14 lbs

Clip capacity	2 x 350 clips
Calibre	25 – 100 mm 0.98 – 3.94 inch
Operating pressure	Max. 6 bar max. 90 psi
Air consumption	5 l
per stroke	Performance at 90 psi 6.2 bar

SUITABLE CLIPS

BCS-200DC-R	XE-CAA, XE-CBA, XE-CCA, XE-CDA, XE-CEA (similar to E-200 series)
-------------	------------------------------------------------------------------

SEMI-AUTOMATIC

05

DOUBLE CLIPPER BCS-200SM

The semi-automatic BCS-200SM double clipper can be connected mechanically to any filler. It is especially suitable for fastening sausage products in a calibre range of 25 to 100 mm (0.98 to 3.94 inch). The ideal machine for medium-sized trades.

CE

- Compressed air operation – no electrical power required
- Extremely corrosion-proof, stainless steel and plastic construction
- With mobile, height-adjustable undercarriage
- Pneumatic casing brake for even filling
- Precise portioning
- Automatic cutting between portions



AUTOMATIC FILLER CONTROL

A controller on the clipper regulates synchronous operation with the filler. The filler determines the portion size with the exact weight required.

PIVOTABLE CLIP HEAD

The clip head is pivotable by 90 degrees for easier loading of the filling tube.

OPTIONAL LOOP INSERTER

At the press of a button, a loop is inserted before the clipping process. The loop feed is available as an optional accessory.



DEVICE SPECIFICATION

HEIGHT	WIDTH	LENGTH	WEIGHT
1800 mm 70.87"	1200 mm 47.24"	760 mm 29.92"	53 kg 116.85 lbs

Clip capacity	2 x 350 clips
Calibre	25 – 100 mm 0.98 – 3.94 inch
Operating pressure	Max. 6 bar max. 90 psi
Air consumption	5 l
per operation	Performance at 58 psi 4 bar

SUITABLE CLIPS

BCS-200SM

XE-CAA, XE-CBA, XE-CCA, XE-CDA, XE-CEA (similar to E-200 series)

FULLY AUTOMATIC

06

DOUBLE CLIPPER BCS-200AM

The BCS-200AM is a new, fully automatic double clipper that can be mechanically connected to any filler. The automatic clipper has been specially designed for all types of casing in a calibre range from 25 to 100 mm (0.98 - 3.94 inches). The ideal machine for small, medium and large scale trades as well as industrial companies that manufacture small and medium-sized products.

CE

- Working with clips serie E 200 spools
- Automatic filling, clipping and cutting



TOUCHSCREEN CONTROL

The BCS-200AM is controlled and service inspections are conducted from an integrated touchscreen. The number of portions produced and important operating parameters can be checked on the screen.



SMOOTH REMOVAL

The finished portions are removed gently and smoothly on the support plate with rollers.



DEVICE SPECIFICATION

HEIGHT	WIDTH	LENGTH	WEIGHT
1700 mm 66.93"	1200 mm 47.24" 1570 mm 61.81" - XL 1770 mm 69.68" - XXL	800 mm 31,50"	115 kg 253.53 lbs

Clip capacity	4500 – 6500 spool
Calibre	25 – 100 mm 0.98 – 3.94 inch
Operating pressure	Max. 6 bar max. 90 psi
Air consumption	10 l
per stroke	Performance at 58 psi 4 bar

SUITABLE CLIPS

BCS-200AM

XE-CAA, XE-CBA, XE-CCA, XE-CDA, XE-CEA (similar to E-200 series) - spools

FULLY AUTOMATIC

06

DOUBLE CLIPPER BCS-700AM

The fully automatic BCS-700AM double clipper can be connected mechanically to any filler. A controller on the clipper regulates synchronous operation with the filler. The filler determines the portion size with the exact weight required. The automatic clipper is especially suitable for fastening all types of casing in a calibre range of 30 to 140 mm (1.18 to 5.51 inch). The ideal machine for small, medium and large scale trades and industry.

- Automatic filling, clipping and cutting
- Precise portioning
- Loop feeder as a standard equipment
- Mobile, height-adjustable undercarriage

VERSIONS



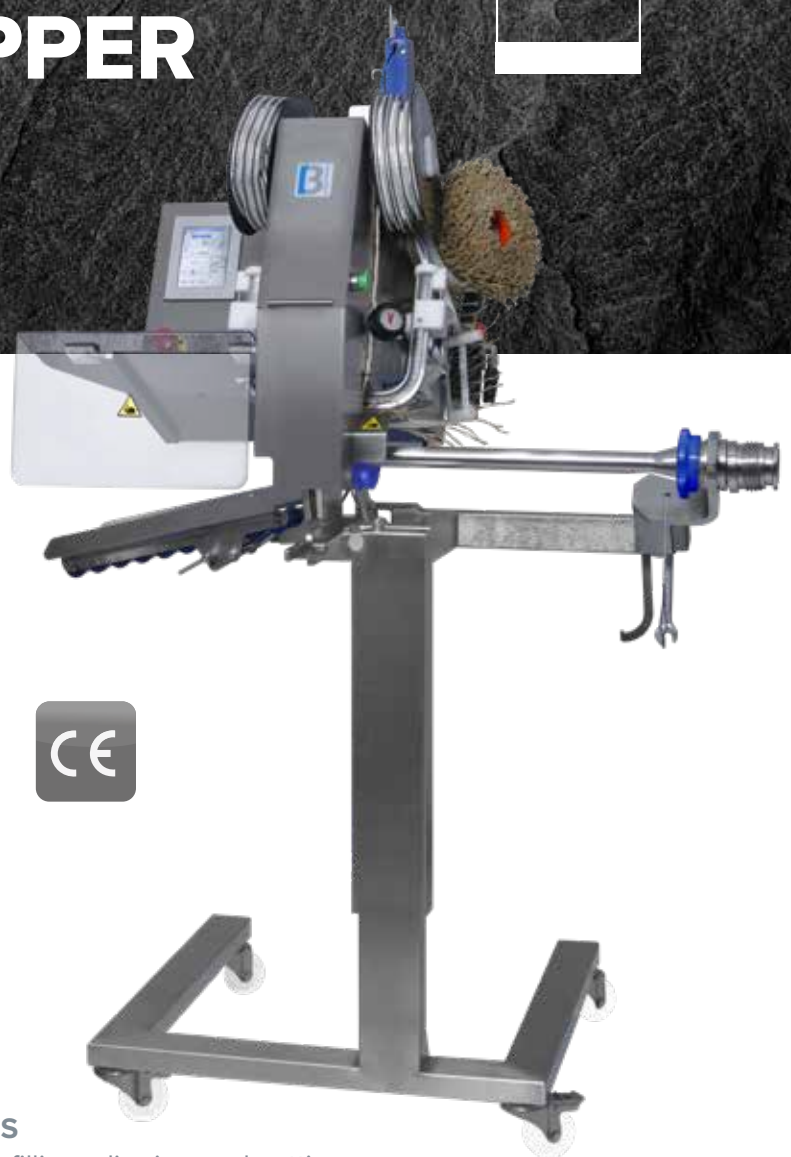
BCS-700AM-S

- Automatic filling, clipping and cutting
- Precise portioning
- For clips on strips
- No automatic clip feeder
- Loop feeder as an optional equipment
- Mobile, height-adjustable undercarriage



BCS-700AM-XL

- Automatic filling, clipping and cutting
- Additional edition with 83 cm long filing tube
- Allows to reduce downtime needed to change casings by over 50 %
- Loop feeder as an optional equipment
- Mobile, height-adjustable undercarriage



TOUCHSCREEN CONTROL

The BCS-700AM is controlled and service inspections are conducted from an integrated touchscreen. The number of portions produced and important operating parameters can be checked on the screen.



SMOOTH REMOVAL

The finished portions are removed gently and smoothly on the support plate with rollers.



DEVICE SPECIFICATION

HEIGHT	WIDTH	LENGTH	WEIGHT
1700 mm 66.93"	1200 mm 47.24" 1570 mm 61.81" - XL 1770 mm 69.68" - XXL	800 mm 31.50"	115 kg 253.53 lbs

Clip capacity	2700 – 3600 clips
Calibre	30 – 140 mm 1.18 – 5.51 inch
Operating pressure	Max. 6 bar max. 90 psi
Air consumption	11 l
per operation	Performance at 58 psi 4 bar

SUITABLE CLIPS

BSC-700AM

XS-HDF, XS-HEA, XS-HEE (similar to S-700 series)

07

CLIPS PACKAGING AND ACCESSORIES



CLIP SYSTEMS stick clips are packed in white boxes with CLIP SYSTEMS labeling. These inner boxes are covered with a transparent wax layer protecting against humidity. One master carton in the CLIP SYSTEMS design contains four of these boxes.

Alongside the large selection of aluminium clips and clippers, we also stock an appropriate range of loops and cords in all common designs and colours, in order to provide our customers with a comprehensive system for sealing and packing.

LOOPS, OL MINOR 44/120

Colour: white, beige
Pieces/Spool: 2 M
Spools/Master Box: 16 p. /32 M



LOOPS, S22/100 AND HGS 25/100

Colour: white, beige
Pieces/Spool: 3 M or 4 M
Spools/Master Box: 16 p. /48 M



CORDS TEB-MTS 30/120

Colour: white
Pieces/Spool: 4 M
Spools/Master Box: 8 p. /32 M



CORDS JSS

Colour: green, red, blue, natural
Spools/Master Box: 4 p.



Subject to technical modifications. Misprints and printing errors excepted; All rights reserved.

Version 11/23 EN

 **CLIP SYSTEMS**
A BECK brand

RAIMUND BECK KG
Raimund-Beck-Str. 1
5270 Mauerkirchen | Austria

T +43 7724 2111-0
office@beck-clipsystems.com

www.beck-clipsystems.com